



519 W 22nd St. Sioux Falls, SD 57105

INCREDIBLE LAND DEVELOPMENT OPPORTUNITY FOR SALE

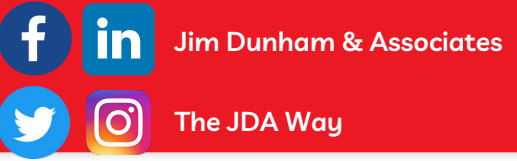
4501 & 4425 W 69th Street
Sioux Falls, SD 57108

\$10.00 PSF - Commercial/Office/Live-Work
\$5.00 PSF - Multi-Family/Luxury Residential
MULTI-FAMILY LAND IS UNDER CONTRACT



Jim Dunham

Broker
605-360-0061
Jim@JimDunhamAssociates.com



FOR MORE INFO
CALL US: 605-275-8500
WWW.JIMDUNHAMASSOCIATES.COM



PROPERTY INFORMATION

MARKETING DESCRIPTION

New Land Development Opportunity!

Located on the south side of 69th Street just west of Beal Avenue (4 blocks west of Louise Avenue). 10 acres fronting 69th Street that is prime for commercial, retail/office and live/work uses.

The additional 18 acres of prime development land - ideally located immediately behind the above referenced land - perfect for a luxury residential community, or a standalone office or medical building.

PROPERTY HIGHLIGHTS

- 10 acres of land fronting 69th Street - \$10.00 PSF - Sub dividable
- 18 +/- acres of prime development land - \$5.00 PSF
- Parcel ID: 281.40.00.100 & 281.40.00.200
- Buyer responsible to rezone the land to fit their intended use

Unbelievable opportunity to acquire/develop 10 to 28 acres (+/-) of Prime Development Land located in highly desirable southern Sioux Falls. Sub dividable to meet individual needs.

Information herein deemed reliable, but not guaranteed



Jim Dunham & Associates



The JDA Way



FOR MORE INFO

CALL US: 605-275-8500



WWW.JIMDUNHAMASSOCIATES.COM

REAL ESTATE. FOR REAL.

PROPERTY PHOTOS



Jim Dunham & Associates



The JDA Way



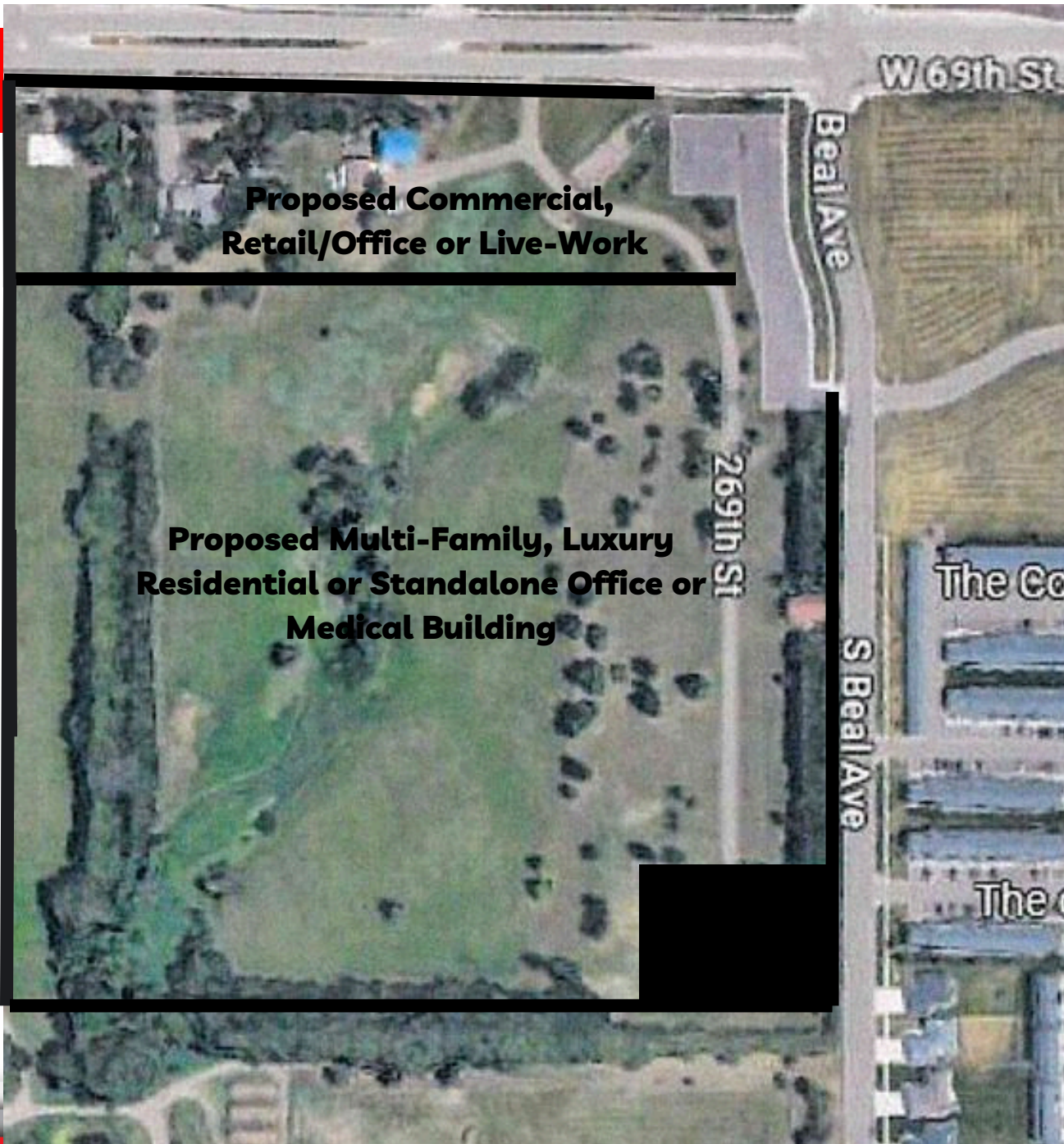
FOR MORE INFO
CALL US: 605-275-8500



WWW.JIMDUNHAMASSOCIATES.COM

REAL ESTATE. FOR REAL.

SITE MAP



Jim Dunham & Associates



The JDA Way



FOR MORE INFO

CALL US: 605-275-8500



WWW.JIMDUNHAMASSOCIATES.COM

REAL ESTATE. FOR REAL.