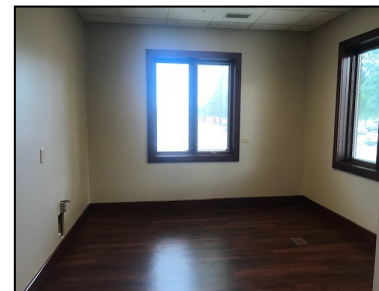


FOR LEASE \$10.00 PSF, NNN



3409 W 47TH STREET SUITE 103  
SIOUX FALLS, SD 57106

- ◆ 1,958 RENTABLE SQUARE FEET (1,780 USABLE SQUARE FEET)
- ◆ FORMER DENTAL OFFICE BUILT OUT
- ◆ THE BUILDING AND SUITE PROVIDE MANY UPGRADES INCLUDING BEAUTIFUL WOOD WORK
- ◆ LARGE WINDOWS ALLOWING FOR GREAT NATURAL LIGHT THROUGHOUT
- ◆ COMMON AREA RESTROOMS
- ◆ MONUMENT SIGNAGE AVAILABLE
- ◆ PLENTY OF ON-SITE PARKING- CROSS EASEMENTS IN PLACE
- ◆ CLOSE TO THE EMPIRE MALL, BANKING, RETAIL, RESTAURANTS AND OTHER OFFICE USERS
- ◆ CO-TENANTS INCLUDE GENUINE BUILDERS INC., BILLION AND WEBER LAW FIRM AND RICHLAND
- ◆ NNN ESTIMATED AT \$4.87 PSF
- ◆ NNN INCLUDES **HEAT!**
- ◆ *THIS IS A MUST SEE TO APPRECIATE EVERYTHING THIS BUILDING HAS TO OFFER!*



**JIM DUNHAM**  
— & ASSOCIATES —  
REAL ESTATE SPECIALISTS



**Stephen Rueber**

Broker Associate

605.521.9027

[Stephen@JimDunhamAssociates.com](mailto:Stephen@JimDunhamAssociates.com)



**Jim Dunham**

Broker

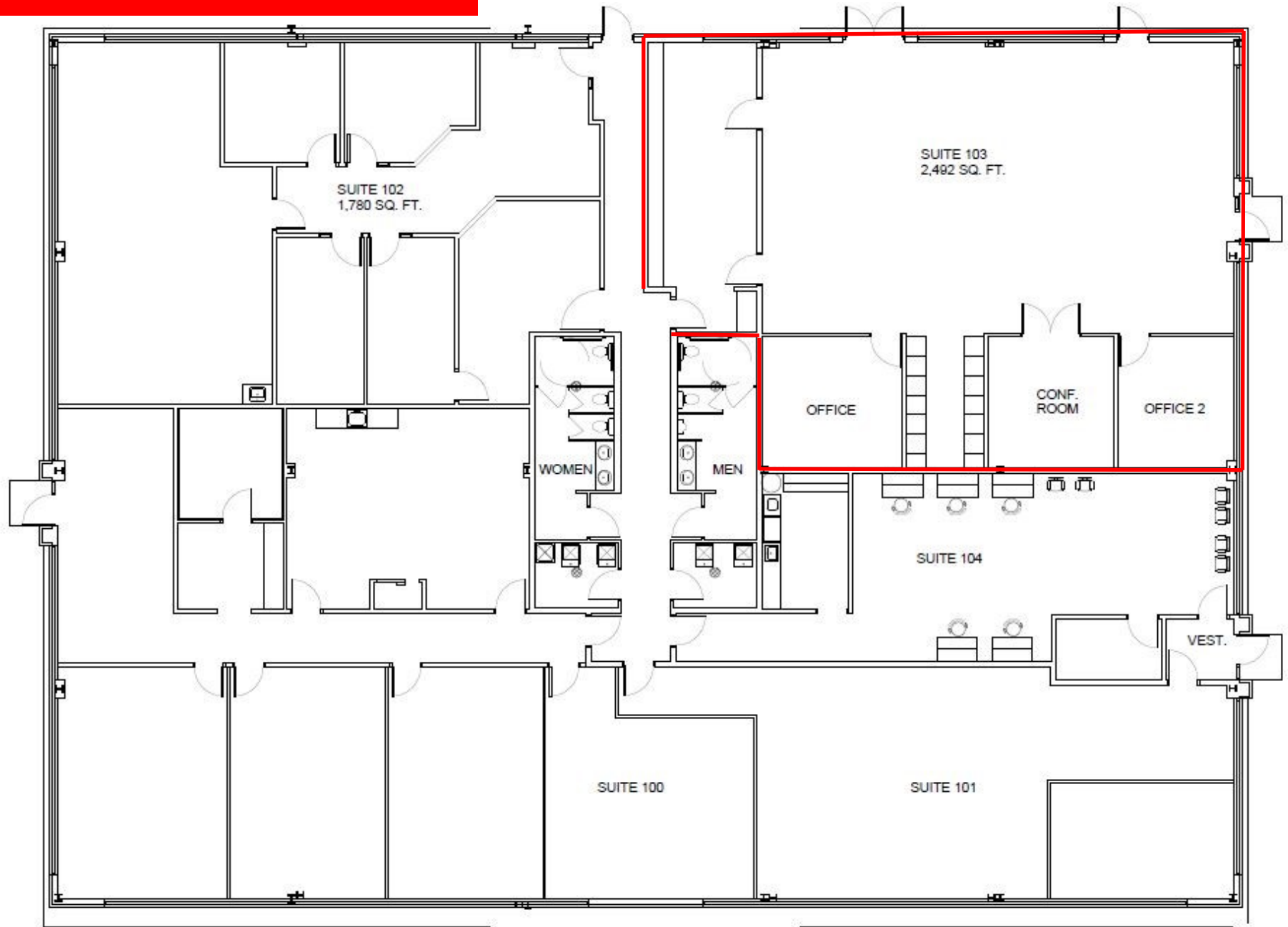
605.360.0061

[Jim@JimDunhamAssociates.com](mailto:Jim@JimDunhamAssociates.com)

Jim Dunham & Associates  
519 W 22nd St, Sioux Falls, SD 57105  
O: 605.275.8500 F: 605.370.6588  
[JimDunhamAssociates.com](http://JimDunhamAssociates.com)



# FLOOR PLAN



REAL ESTATE. FOR REAL.



REAL ESTATE. FOR REAL.